

ZIMMER GROUP'S TOOL CHANGER SPECIAL



TOOL CHANGERS

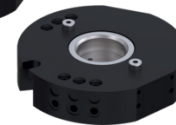


SERIES WPR5000

500kg+ payload with
multi-port flat design

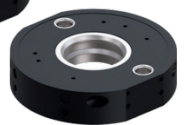
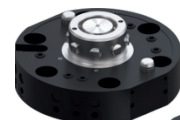
NEW TOOL CHANGER SERIES FOR ALL INDUSTRIES

- ✓ Unique system locking advantage
- ✓ Higher payload in a smaller package
- ✓ Lighter, space-saving design
- ✓ Superior performance
- ✓ Follows ISO 9409-1 connecting flange



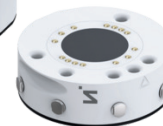
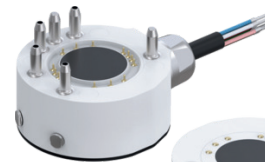
Manual

Up to 40kg payload capacity
with ISO flange integration



Pneumatic

Heavy-duty capacity up to
500kg+ with TK40-160 flange



Magnetic

Hygienic, FDA-compliant design
with smart IO-Link control



Manu-matic

Tool changes without air
supply, up to 29kg capacity

Contact us today!

*Terms and conditions apply.

Features and advantages of New WPR5000 pneumatic tool changer

INTEGRATED PNEUMATIC PASS THROUGH

A tubeless connection is possible thanks to the integrated axial and radial pneumatic feedthroughs.

SAFETY

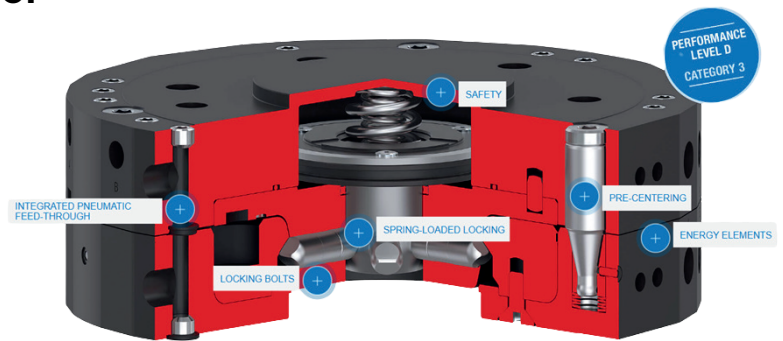
The WPR5000 series tool changers are extremely safe due to their spring-loaded locking mechanism, which holds the loose part securely to the stationary part even in the event of a pressure drop or an emergency stop.

PRE-CENTERING

Pre-centering using conical centering pins on the stationary part ensures smooth changing between the stationary and loose parts while providing extremely high torsional rigidity

ENERGY ELEMENTS

A nearly endless variety of optional energy elements for the transmission of pneumatics, electrical signals and load, communication and hydraulics. The right energy elements for any imaginable transmission scenario.



SPRING LOADED LOCKING

Completely redeveloped locking kinematics result in maximum safety combined with absolute precision. All parts of the locking mechanism are made of hardened corrosion-resistant steel, both in the stationary and in the loose part

LOCKING BOLTS

Locking parts made of hardened steel and locking bolts between the stationary and loose parts, which provide a high tightening stroke at maximum forces and torques, are setting a new standard for tool changers.

Available Sizes in the WPR5000 series

Installation Size	Connecting flange in accordance with EN ISO 9409-1	Pneumatic power transmission [quantity]	Electric power transmission
WPR5040	TK 40	4	optional
WPR5050	TK 50	4	optional
WPR5063	TK 63	6	optional
WPR5080	TK 80	6	optional
WPR5100	TK 100	8	optional
WPR5125	TK 125	10	optional
WPR5160	TK 160	10	optional

Optional accessories – Energy pass throughs

				
Pneumatic pass through	Communication pass through (IO-Link, Profinet, Ethernet, Profibus)	Electrical Signal currents pass throughs / hot plugs	Electrical cable lug / BNC (High-voltage pass)	Hydraulic pass through