

# OMRON PROAX SUPPORT TEAM



**TECH.SUPPORT@PROAX.CA**



## WESTERN

### Vancouver

10230 Grace Road  
Surrey (BC) V3V 3V6  
Tel.: 604 597-8830  
bc@proax.ca

### Winnipeg

300-330 St. Mary Avenue  
Winnipeg (MB) R3C 3Z5  
Tel.: 204 396-5444  
manitoba@proax.ca

## CENTRAL

### Toronto

2552, Bristol Circle  
Oakville (ON) L6H 5S1  
Tel.: 905 829-2006  
Toll free: 1 866 592-1240  
oakville@proax.ca

### Barrie

21, Hooper Rd  
Barrie (ON) L4N 9S3  
Tel.: 705 408-1010  
barrie@proax.ca

### Sudbury

2140, Regent Street S,  
Unit #14  
Sudbury (ON) P3E 5S8  
Tel.: 705 585-0104  
sudbury@proax.ca

### Windsor

440, Advance Boulevard  
Tecumseh (ON) N8H 5G8  
Tel.: 519 727-0077  
Toll free: 1 800 872-8018  
windsor@proax.ca

### London

555, Consortium Court  
London (ON) N6E 2S8  
Tel.: 519 685-1540  
Toll free: 1 800 265-4650  
london@proax.ca

### Cambridge

405, Maple Grove Road,  
Unit #13  
Cambridge (ON) N3E 1B6  
Tel.: 519 340-0102  
kw@proax.ca

## EASTERN

### Montreal

3505, rue John-Pratt  
Laval (QC) H7P 0C9  
Tel.: 450 902-5900  
Toll free: 1 800 557-7386  
info@proax.ca

### Granby

834, boulevard Industriel  
Granby (QC) J2J 1A4  
Tel.: 450 915-2031  
granby@proax.ca

### Quebec City

240, rue Sydney, unit #110  
Saint-Augustin-de-  
Desmaures (QC) G3A 0P2  
Tel.: 450 425-5901  
quebec@proax.ca

### St-John's

1, Austin Street  
St-John's (NL) A1B 4C1  
Tel.: 709 383-0271  
nl@proax.ca



# OMRON AUTOMATION & SAFETY

## Automation Systems



## Motion & Drives



## Sensing



## Vision



## Industrial Components



## Safety



[www.proax.ca](http://www.proax.ca)

v2019-11 EN\_ON\_Atlantic

**OMRON**

[www.proax.ca](http://www.proax.ca)



## 1 Safety Light Curtains

The F3SG-R is the new standard of safety light curtain, offering both robustness and reliability.



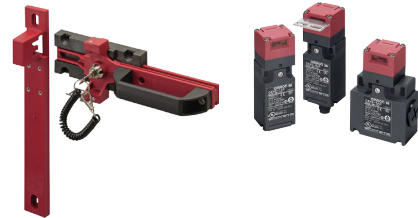
## 2 Safety Laser Scanners

The OS32C covers all these requirements in collision avoidance, presence and intrusion detection applications.



## 3 Safety Door Switches

The D4NS series are versatile tongue-operated safety door switches.



## Safety Relay/Controllers 4

The relay G7SA is a forcibly guided relay available for socket or PCB-mounting.



The NX-S offers safety over EtherCAT.

The G9SP is the standalone.

G9SE is versatile, compact and fast to install.

## Safety Mats, Bumpers & Edges 5



Built tough for tough environments. Combine a mat with a controller for proven reliability.

## Modular Safety I/O Systems 6



Safe and non-safe I/O systems through EtherCAT (distributed) or EtherNET/IP (standalone).

## HMI 7

The NA Series is the next generation of machine interface, making it fast and easy to implement dynamic user interfaces.



## 8 Sensors

The E2A sensors provide the best value performance ratio for standard applications.



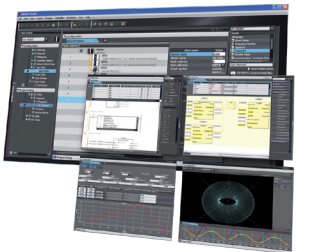
## Machine Automation 9 Controllers

CP1L-E micro PLC.

The NJ is a new Sysmac controller for logic sequence aimed for compact machines.

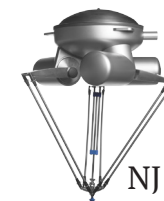
## Sysmac Automation Platform 10

Sysmac is the latest machine automation platform from Omron with seamless integration from controller to software.



## Delta Robot 11

NJ Sysmac platform with robotic kinematic.



## Vision 12

The FQ2/FH systems have exceptional performance with easy installation.



## Industrial Components 13

Wide variety of relays, timers, counters, power supply & temperature controllers.



## Motion Control 14

MX2 compact drive.

G5 servo motors.

NJ is a new Sysmac controller for motion control aimed for compact machines.

