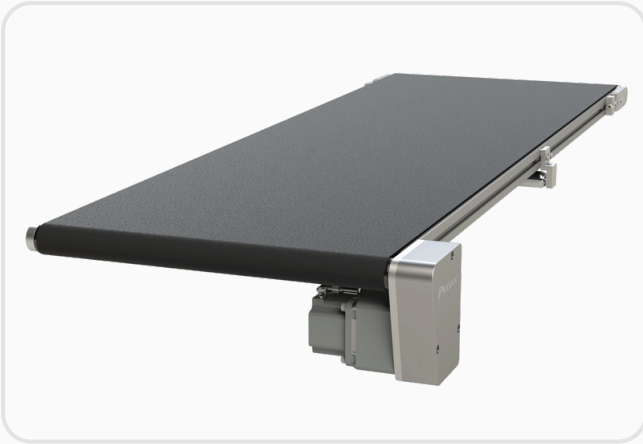


C45 SERIES FLAT BELT CONVEYOR

KEY FEATURES



Application

For light and medium-duty use



Load Capacity

Up to 225 kg (496 lbs)



Speed Range

Up to 98 m/min (320 ft/min)



Available Sizes

Width: 90 mm (3.5") to 610 mm (24")
Length: Up to 6000 mm (236")

DRIVE OPTIONS

Left Drive



Right Drive



- ✓ Left or Right Drive for installation flexibility
- ✓ Gear Motor could be mounted parallel or 90 degrees
- ✓ Typical drive direction will be pulling the product

BELT TRACKING OPTIONS

Crowned



V-Guided



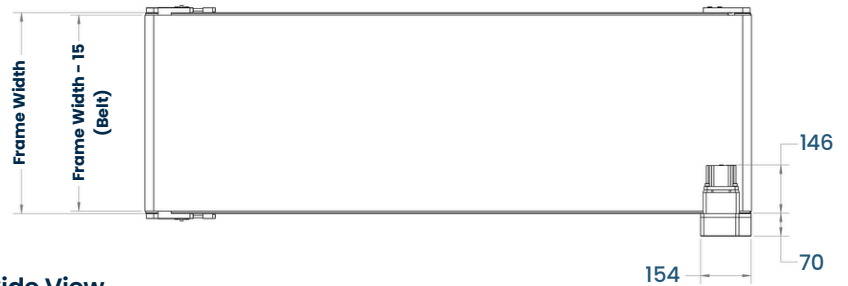
- ✓ Crowned roller on all sizes
- ✓ V-Guided roller option from 203mm (8") for side load
- ✓ Easier to adjust when need it
- ✓ Could run faster without tracking issue

STANDARD WIDTH OPTIONS

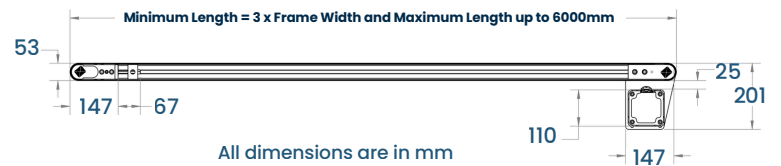
 **Adjustable Length**
450-6096mm (18-240in)

Frame Width	
Metric	Imperial
90mm	3.5"
152mm	6"
203mm	8"
305mm	12"
457mm	18"
533mm	21"
610mm	24"

Bottom View



Side View



BELT OPTIONS

PVC Belt



- ✓ Cost-effective solution
- ✓ General purpose material for belt
- ✓ Ideal for light-medium duty
- ✓ Easy to clean

TPU Belt



- ✓ High durability
- ✓ Excellent wear resistance
- ✓ Chemical resistant
- ✓ Suitable for heavy-duty use

MOTOR OPTIONS



Input Voltage
Supports various voltages



AC or DC Motor
Up to 400W gear motors
(5:1 to 50:1 ratio)



Constant & Variable Speed
Optional AC drive

OPTIONAL FEATURES

Side Guides



- ✓ Fixed Guides
- ✓ Adjustable Guides

Support Options



- ✓ Levelling feet
- ✓ Various heights available



- ✓ Fixed and swivel wheel
- ✓ Optional lock wheel available
- ✓ Various heights available

QUOTE REQUEST

To get your conveyor quote, please scan the QR code here or visit our website at proax.ca/en/promotions/c45-series-flat-belt-conveyor

